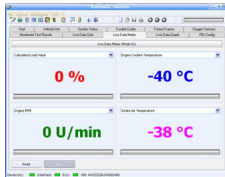


ScanMaster-PassThru

Geschrieben von: Administrator

Sonntag, 07. Dezember 2008 um 12:19 Uhr - Aktualisiert Sonntag, 07. Dezember 2008 um 12:23 Uhr

The new software ScanMaster-PassThru is ready. The program has the same performance range, like ScanMaster-ELM. This program works with modern, future oriented PassThru interfaces and is based on the [SAE J2534-1](#) standard.



Useful links:

[All about J2534](#)

J2534 interface manufacturer:

[Drew Technologies](#)

[Actia](#)

[Vetronix Corporation](#)

[EASE Diagnostics](#)

[Snap-On](#)

[Blue Streak Electronics Inc.](#)

[Dearborn Group](#)

[Kvaser](#)

Please, in case of questions use feedback form.